



TILKE
GmbH & Co. KG

P O R
COMPANY

T F O
PRESENTATION

L I O
& PORTFOLIO

INTRODUCTION

NICE TO MEET YOU!



+ A1 | company presentation and relevant experience

Tilke Engineers & Architects was established in 1983 and is globally recognized as the leading designer of racetrack and test facilities and their related support systems. Since its inception, the company has become the largest and most influential designer of its kind in the world.

In its 40-year history, the company has also become renowned for its state-of-the-art test and proving grounds, and has completed more than 1,000 projects in over 50 countries (95 race tracks worldwide designed and in operation, 30 FIA Grade 1 race tracks including street circuits).

Today, Tilke is leading the way in the dramatic global expansion of private motorsports circuits. The kind of success enjoyed by the company is attributable to a host of factors but perhaps the most important is the interdisciplinary “end-to-end” approach taken by its professionals when addressing any new project. Beyond track design and engineering, the Tilke project team embraces architecture, operational support for new facilities, business plan support, community engagement, infrastructure planning and the many disparate aspects that must be considered for a successful project. Track projects inevitably start with a feasibility study and draft business plan, moving from there to schematic design and 3D simulations. Detailed designs follow with construction drawings. On-site construction support and site supervision ensure the reality matches the vision. Building sustainability considerations into today’s plans is essential.

Dramatic facility architecture, designed in harmony with the developer’s vision and the host location, make an invaluable contribution to every project. Paddock buildings, garages, control centers, club member facilities, residences, restaurants and hotels - all can play a part in a successful plan. The extended menu of services touches everything from event management and operational support to landscaping, track safety and timing systems.

The company’s credentials extend well beyond the realm of automotive facilities and race tracks. Tilke has left its imprint on major developments that embrace a broad scope of venues such as hotels, hospitals, housing projects, shopping mall and sports facilities around the world. With 150 highly skilled architects and engineers in six offices around the globe, the Tilke name appears regularly on some of the world’s most compelling and successful projects.

HERMANN TILKE
Managing Director
Tilke GmbH & Co. KG

DR. CARSTEN TILKE
Managing Director
Tilke GmbH & Co. KG

THE TILKE COMPANY WHO WE ARE



● SELECTION OF MAJOR PROJECTS

● TILKE OFFICES

+ A1 | company presentation and relevant experience

ALL DISCIPLINES. ONE SOURCE.

Race Drivers | Civil Engineers | Architects | Business Consultants | Site Managers | MEP Engineers | Project Managers

Tilke is the largest and most influential designer for race tracks and automotive facilities in the world. We are renowned for our state-of-the-art test and proving grounds and have completed more than 1.000 projects in over 50 countries. Our company consists of passionate experts and creative doers to design and realize innovative solutions to meet the future demands for auto-motive testing. With more than 150 employees we are covering all disciplines and interfaces from one single source.

Our multidisciplinary in-house team of race drivers, engineers, architects, project managers, business and marketing consultants creates value for your project using the unique Tilke approach - creating a modular design which can be realized step by step according to the market needs and demands.

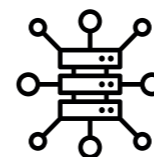
THE TILKE COMPANY WHO WE ARE

+ A1 | company presentation and relevant experience



WE ARE TILKE FAMILY

Beside benefiting from our professional services our clients also get access to our global industry and partner network. All of the tracks designed by Tilke are invited to become member of the Motorsport Club of Clubs.



ALL FROM ONE SOURCE: CONSULTING, ENGINEERING, ARCHITECTURE & OPERATION

The Tilke company comprises of an interdisciplinary and highly passionate team of engineers, architects, consultants and race drivers, operating in various offices around the globe. Tilke's services include civil engineering, architectural design, as well as MEP and electronic engineering from the first initial concept to detailed design, construction supervision, project management and operation.



KEY FOCUS: INNOVATION & SUSTAINABILITY

Being the innovative leader in racetrack design, it is Tilke's approach to move the boundaries further and to develop the **RACETRACK OF THE FUTURE** with every new project!

THE TILKE COMPANY
WHO WE ARE

+ A1 | company presentation and relevant experience

- 95** RACETRACKS WORLDWIDE
DESIGNED & IN OPERATION
- +350** DESIGNED MOTORSPORT MASTERPLANS
- 29** HOMOLOGATED FIA GRADE 1 RACETRACKS
- 40** YEARS OF EXPERIENCE IN PLANNING
PROJECTS FOR THE AUTOMOTIVE INDUSTRY
- 150** PASSIONATE ARCHITECTS & ENGINEERS
- No1** FOR DESIGN & DELIVERING
CIRCUITS WORLDWIDE

„With our organization, we strive to offer the complete package from one single source: An **interdisciplinary in-house team** of engineers, architects, race drivers, business & event consultants. **Lean, agile and specialized.** This has been the most valuable aspect for all of our clients.“

Hermann Tilke
Managing Director Tilke GmbH & Co.KG

ALL PHASES FROM ONE HAND

THE PROCESS OF YOUR FUTURE PROJECT



Every project has its own set of unique circumstances - be it the location, project partners, constraints, goals, or timeline. Maximize your project's potential with us, a partner who understands the nuances. Our customized approach saves you money and time while ensuring added value at every stage. Trust us to deliver results that meet your unique needs and requirements.

Realize your vision with ease using our modular design approach. Our concept is developed in manageable stages, adapting to market growth and demand for scalable solution.

OUR SERVICES WHAT WE DO



CIRCUIT DESIGN & TEST AND PROVING GROUNDS

- Vision Workshop
- Feasibility Study
- Masterplan
- 3D Simulation
- Circuit Design Services
- Safety & Risk Analysis
- Project Management
- Asphalt Consultancy
- (Race) Electronics & Track Lighting Design
- Site Inspection
- Homologation (e.g. FIA / FIM)
- Marketing Strategy & Branding
- Maintenance Workshop
- Operations Support
- Strategic Phasing Study
- Circuit Certifications
- Tilke Networking Platform

ARCHITECTURE

- Vision Workshop
- Feasibility Study
- Masterplan
- 3D Renderings
- Concept Design, Schematic Design & Detailed Design
- Site Inspection
- MEP Design
- Project Management & Development
- Sustainability Concept
- Tender & Construction Design



TILKE ENGINEERING



TILKE ARCHITECTURE



TILKE OPERATIONS



TILKE CONSULTANCY



TILKE DIGITAL

WHO WE ARE

TILKE ENGINEERING

+ introduction

WHAT WE DO | TILKE ENGINEERING

Tilke's engineering department is mainly responsible for the technical planning and realisation of our race tracks and test & proving grounds. In an interdisciplinary team, the civil engineering department always works closely with our structural engineers, architects and MEP specialists.

Our civil engineers are responsible for the following points:

- Feasibility Studies
- Circuit Designs
- Masterplans
- 3D Simulations
- Asphalt Consultancy
- Speed Calculations
- (Race) Electronics & Track Lighting Design
- Circuit Certifications
- Detailed Design of infrastructure, road construction, soil engineering etc.

...and much more



WHO WE ARE
TILKE ARCHITECTURE

+ introduction

WHAT WE DO | TILKE ARCHITECTURE

For our major racetrack projects, Tilke's architecture department is primarily responsible for the design and construction of all racetrack related buildings. For club venues, additional designs for club houses, premium villas, etc. are included. In addition, we also develop architectural projects that are not primarily related to motorsport, such as sports facilities, residential projects, experience centres for automotive brands, etc.

Our architects work in an interdisciplinary team with civil engineers, structural engineers and MEP specialists. This automatically means that their responsibilities overlap:

- Feasibility Studies
- Circuit Designs
- Masterplans
- Circuit Certifications (e.g. building homologations)
- Architectural Concept Design
- Architectural Schematic Design
- Architectural Schematic Design

...and much more

WHO WE ARE

TILKE OPERATIONS

+ introduction

WHAT WE DO | TILKE OPERATIONS

Every racetrack is unique, and so are the challenges associated with its operation. We support both existing and developing race tracks with all issues relating to racetrack operations and event management - either through consultancy or by providing on-site staff. We can also provide full track management services to support the development of a successful local operation.

As an independent entity but closely linked to Tilke Engineering and Architecture, Tilke Operations is leveraging the advantages of this connection to access a vast network of resources and industry insights. This allows us to provide comprehensive support, whether through consultancy and management services or providing on-site staff, to meet our clients' specific requirements.

- Consultancy for cost reduction
- Enhancement of efficiency
- Identifying growth opportunities
- Ensuring seamless delivery of projects
- Specialist planners to meet the client's expectations (Tilke Engineering & Architecture)
- Site supervision
- Task Forces for various disciplines (Track Task Force, Building Task Force, Overlay Management etc.)

...and much more

WHO WE ARE

TILKE CONSULTANCY

+ introduction

WHAT WE DO | TILKE CONSULTANCY

Tilke Consultancy is a division that benefits from close links with Tilke Engineering, Tilke Architecture and Tilke Operations.

We provide our clients with the best possible advice and are at their disposal with our professional expertise. We focus on optimising and achieving the full potential of our clients' projects. Some of the responsibilities overlap with those of Tilke Operations:

- Identifying ideas for a diverse utilisation of the existing racetracks
- Consultancy for cost reduction
- Enhancement of efficiency
- Identifying growth opportunities
- Technical consultancy (e.g. Asphalt Consultancy etc.)

...and much more



WHO WE ARE
TILKE DIGITAL

+ introduction

WHAT WE DO | TILKE DIGITAL

Tilke Digital is a new segment in the Tilke portfolio that is still in its infancy. With almost 100 racetracks realised worldwide, we have a lot of experience in planning and constructing of real tracks. But in fact, the enthusiasm for e-sports is growing worldwide: Driving on famous tracks in a simulator inspires young and old and the demand for new digital tracks is growing.

With Tilke Digital we are preparing our tracks digitally. It also gives us the opportunity to digitally realise projects that were not built for various reasons. And there are no limits to imagination: Even fictional racetracks can be created digitally and transport the user to a strange and breathtaking world.

- Digital preparation of existing tracks made by Tilke
- Providing tracks digitally, that were not realized for various reasons
- Digital design of fictional racetracks
- Increasing the reputation of existing tracks by making them digitally available for a wide range of users

...and much more

+ selection of projects

RACETRACKS



QATAR

LUSAIL INTERNATIONAL CIRCUIT

Type of Project: Formula 1 Circuit, Permanent Racetrack
 Location: Lusail, Qatar
 Client: LIC (Lusail International Circuit)
 Start year and end year: 2021-2023
 Status: completed, in operation

License: FIA Grade 1, FIM Grade A
 Track Length: 5419 m
 Number of Turns: 16

Architectural Elements:
 Pit Building, incl. Race Control
 Team Hospitality Buildings
 Commentary Booths
 Media Center
 Medical Center
 VVIP Building
 Administration Building
 Academy Building
 Ancillary Buildings (e.g. transformer stations, lavatories, shower buildings etc.)





NEVADA, USA

LAS VEGAS STRIP CIRCUIT

Type of Project: Formula 1 Street Circuit
Location: Las Vegas, Nevada, USA
Client: LVGP (Las Vegas Grand Prix)
Start year and end year: 2021-2023
Status: completed, in operation

License: FIA Grade 1
Track Length: 6201 m
Number of Turns: 17

Architectural Elements: Pit Building, incl. Race Control (semi-temporary)
Team Hospitality Buildings (temporary)
Pedestrian Bridges (temporary)
Vehicle Bridges (temporary)
Grandstands (temporary)





+ selection of projects

KAZAKHSTAN

SOKOL INTERNAT. RACETRACK

Type of Project: Permanent Racetrack
Location: Sokol, Kazakhstan
Client: LLP - STK Sokol
Start year and end year: 2020-2022
Status: completed, in operation

License: FIA Grade 2, FIM Grade A
Track Legth: 4495 m
Number of Turns: 13

Architectural Elements:
Pit Building
Race Control Tower (temporary)
Vehicle Bridges (temporary)
Pedestrian Bridges (temporary)
Commentary Booths (temporary)
Media Center (temporary)
Medical Center (temporary)
Grandstands (temporary)



+ selection of projects

SAUDI ARABIA

JEDDAH CORNICHE CIRCUIT

Type of Project: Formula 1 Street Circuit
Location: Jeddah, Saudi Arabia
Client: Saudi Automobile & Motorcycle Federation
Start year and end year: 2020-2021
Status: completed, in operation

License: FIA Grade 1
Track Length: 6175 m
Number of Turns: 27

Architectural Elements: Pit Building, incl. Race Control (semi-temporary)
Team Hospitality Buildings (temporary)
Pedestrian Bridges (temporary)
Vehicle Bridges (temporary)
Media Center (temporary)
Medical Center (temporary)
Commentary Booths (temporary)
Grandstands (temporary)





selection of projects



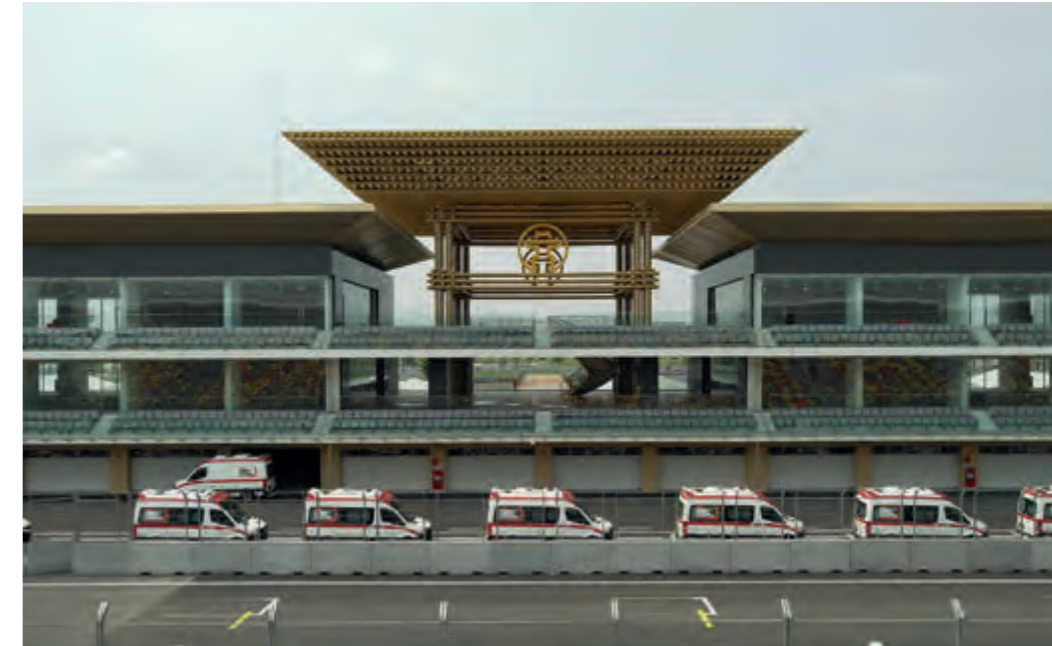
VIETNAM

HANOI INTERNATIONAL CIRCUIT

Type of Project: Formula 1 Street Circuit
Location: Hanoi, Vietnam
Client: Vietnam Grand Prix Llc
Start year and end year: 2018-2020
Status: completed
event postponed due to COVID19

License: FIA Grade 1
Track Length: 5607 m
Number of Turns: 22

Architectural Elements:
Pit Building, incl. Race Control (temporary)
Team Hospitality Buildings (temporary)
Commentary Booths (temporary)
Media Center (temporary)
Medical Center (temporary)
Vehicle Brigs (temporary)
Grandstands (temporary)





+ selection of projects

 VIETNAM GRAND PRIX



PHILIPPINES

PRADERA VERDE RACE PARK

Type of Project: Permanent Racetrack
Location: Lubao, Philippines
Client: Pradera Verde Estates
Status: under construction

License: FIA Grade 2, FIM Grade A
Track Legth: 5014 m

Architectural Elements: Pit Building, incl. Race Control
Main Grandstand

Additional Elements: Dragster Strip
Karting Track



SWITZERLAND

E-PRIX ZURICH

Type of Project:	Formula E Street Circuit
Location:	Zurich, Switzerland
Client:	Ok Eprix Zurich
Start year and end year:	2016-2018
Status:	completed
License:	Formula E
Track Legth:	2460 m
Architectural Elements:	Pit Building, incl. Race Control (temporary) Grandstands (temporary)



+ selection of projects



KUWAIT

KUWAIT MOTOR TOWN

Type of Project: Permanent Racetrack
Location: Ahmadi, Kuwait
Client: Kuwait Motor Town
Start year and end year: 2017-2018
Status: completed, in operation

License: FIA Grade 1, FIM Grade A
Track Legth: 5609 m
Number of Turns: 20

Architectural Elements: Pit Building, incl. Race Control
Main Grandstand

Additional Elements: Dragster Strip
Karting Track
Off-road Area





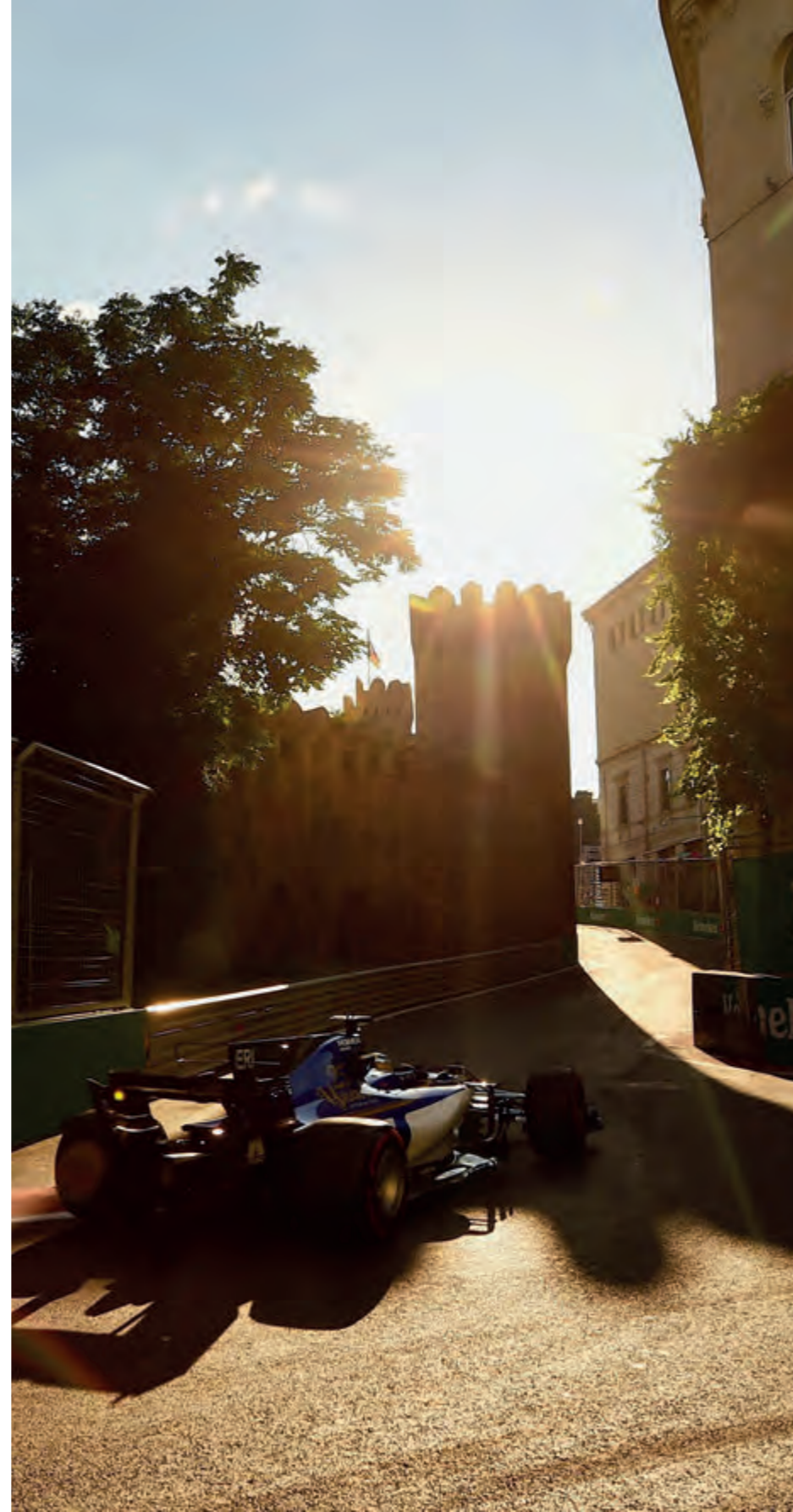
AZERBAIJAN

BAKU STREET CIRCUIT

Type of Project: Formula 1 Street Circuit
Location: Baku, Azerbaijan
Client: Baku Grand Prix LLC
Start year and end year: 2014-2016
Status: completed, in operation

License: FIA Grade 1
Track Length: 6003 m
Number of Turns: 20

Architectural Elements: Pit Building, incl. Race Control (temporary)
Team Hospitality Buildings (temporary)
Vehicle Bridge (temporary)
Pedestrian Bridges (temporary)
Media Centre (temporary)
Medical Centre (temporary)
Commentary Booths (temporary)
Grandstands (temporary)





+ selection of projects



MEXICO

AUTODROMO HERMANOS RODRIGUEZ

Type of Project: Formula 1 Circuit, Permanent Racetrack
Location: Mexico City, Mexico
Client: CIE International S.A.B De C.V.
Start year and end year: 2013-2015
Status: completed, in operation

License: FIA Grade 1
Track Legth: 4304 m
Number of Turns: 17

Architectural Elements: Pit Building, incl. Race Control
Media Center
Medical Center
Grandstands





RUSSIA

SOCHI AUTODROM

Type of Project: Formula 1 Circuit, Permanent Racetrack
Location: Sochi, Russia
Client: OAO Omega
Start year and end year: 2012-2014
Status: completed, in operation

License: FIA Grade 1
Track Length: 5848 m
Number of Turns: 18

Architectural Elements: Pit Building, incl. Race Control
Team Hospitality Buildings
Media Centre
Medical Centre
Grandstands



+ selection of projects

THAILAND

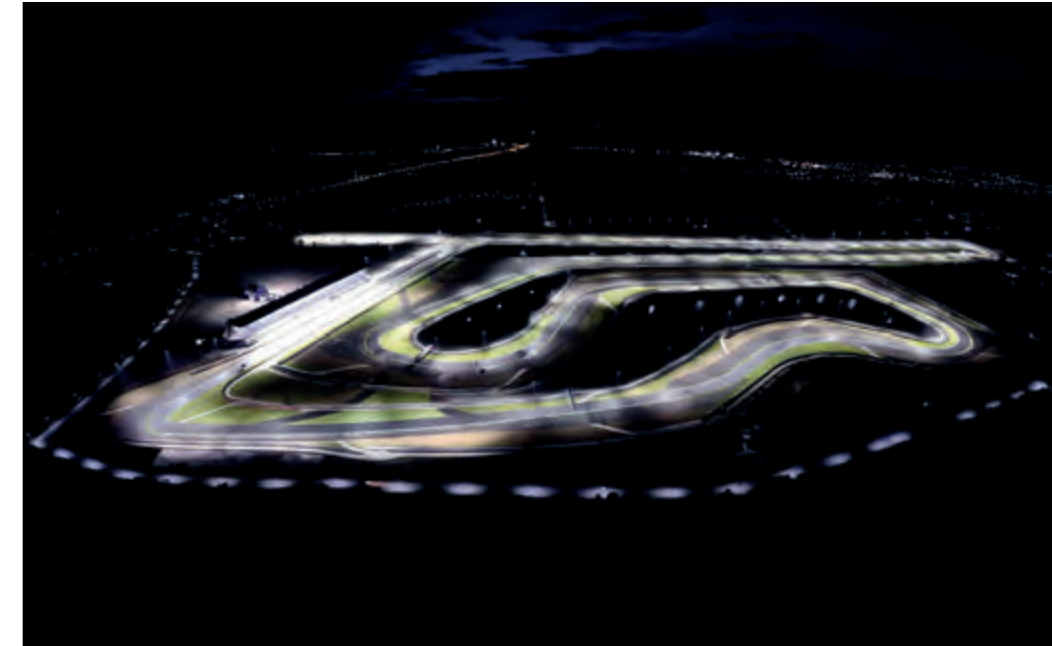
CHANG INTERNATIONAL CIRCUIT

Type of Project: Permanent Racetrack
Location: Buriram, Thailand
Client: K Motorsport Ltd.
Start year and end year: 2012-2014
Status: completed, in operation

License: FIA Grade 2, FIM Grade A
Track Length: 4554 m
Number of Turns: 12

Architectural Elements: Pit Building, incl. Race Control
Grandstands

Additional Elements: Dragster Strip
Super Cross Track
Noise Vibration Area
Test Facilities



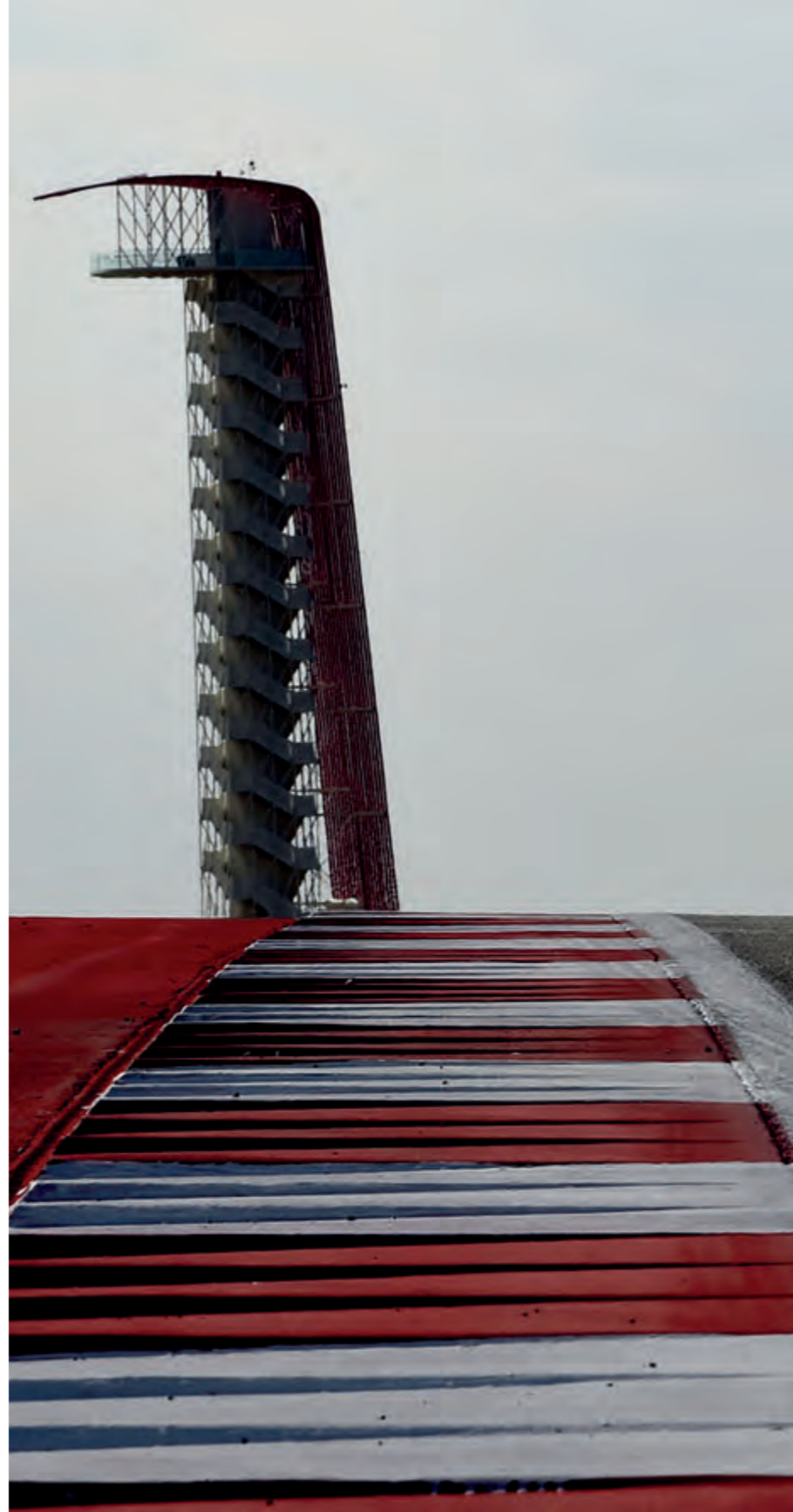
TEXAS, USA

CIRCUIT OF THE AMERICAS

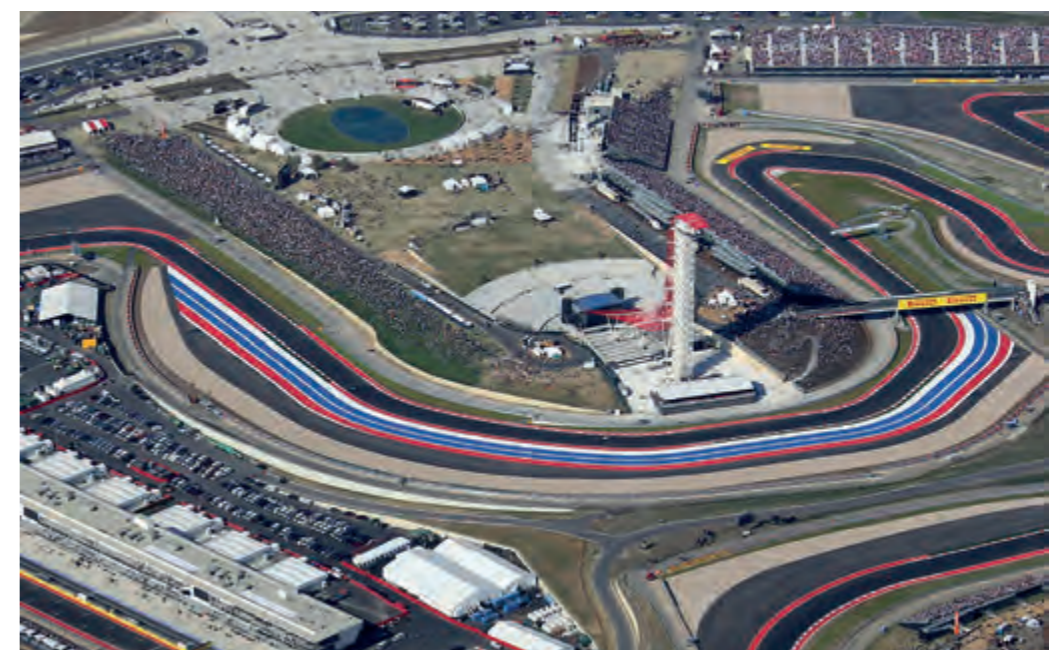
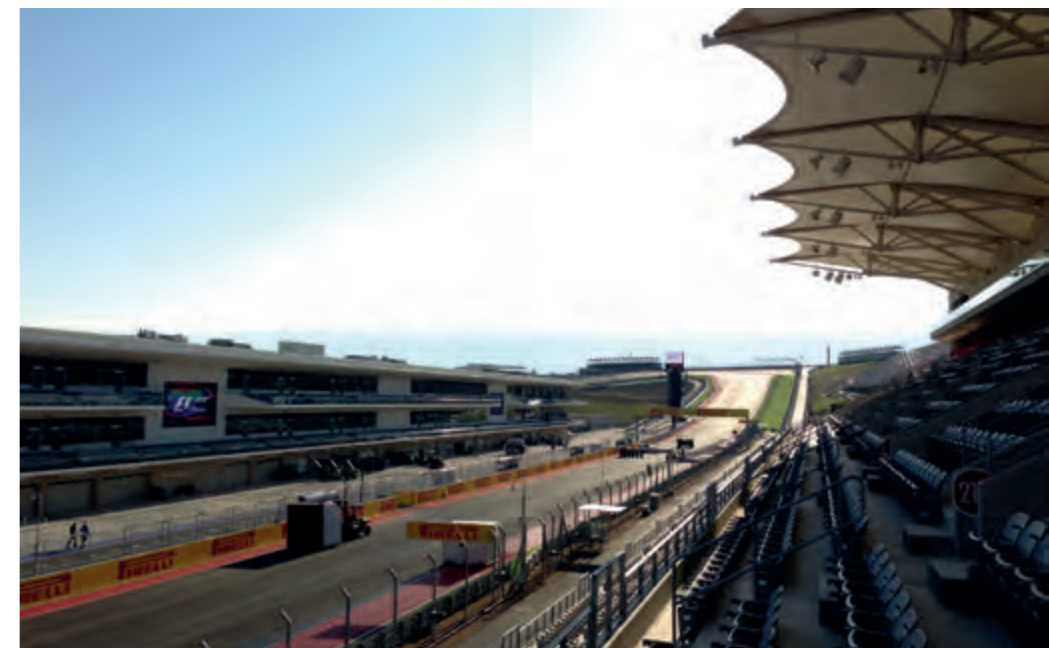
Type of Project: Formula 1 Circuit, Permanent Racetrack
Location: Austin, Texas, USA
Client: Full Throttle Productions Ltd.
Start year and end year: 2010-2012
Status: completed, in operation

License: FIA Grade 1
Track Length: 5515 m
Number of Turns: 20

Architectural Elements: Pit Building, incl. Race Control
Team Hospitality Buildings (temporary)
Media Centre
Medical Centre
Grandstands



+ selection of projects





RUSSIA

MOSCOW RACEWAY

Type of Project: Permanent Racetrack
Location: Moscow, Russia
Client: Strategia
Start year and end year: 2010-2012
Status: completed, in operation

License: FIA Grade 1, FIM Grade A
Track Length: 3931 m
Number of Turns: 14

Architectural Elements: Pit Building, incl. Race Control
Media Centre
Medical Centre
Grandstands



INDIA

BUDDH INTERNATIONAL CIRCUIT

Type of Project: Permanent Racetrack
Location: New Delhi, India
Client: Jaypee Group
Start year and end year: 2009-2011
Status: completed, in operation

License: FIA Grade 1, FIM Grade A
Track Length: 5137 m
Number of Turns: 16

Architectural Elements: Pit Building, incl. Race Control
Team Hospitality Buildings
Support Pit Building
Main Grandstand
Media Centre
Medical Centre
Grandstands



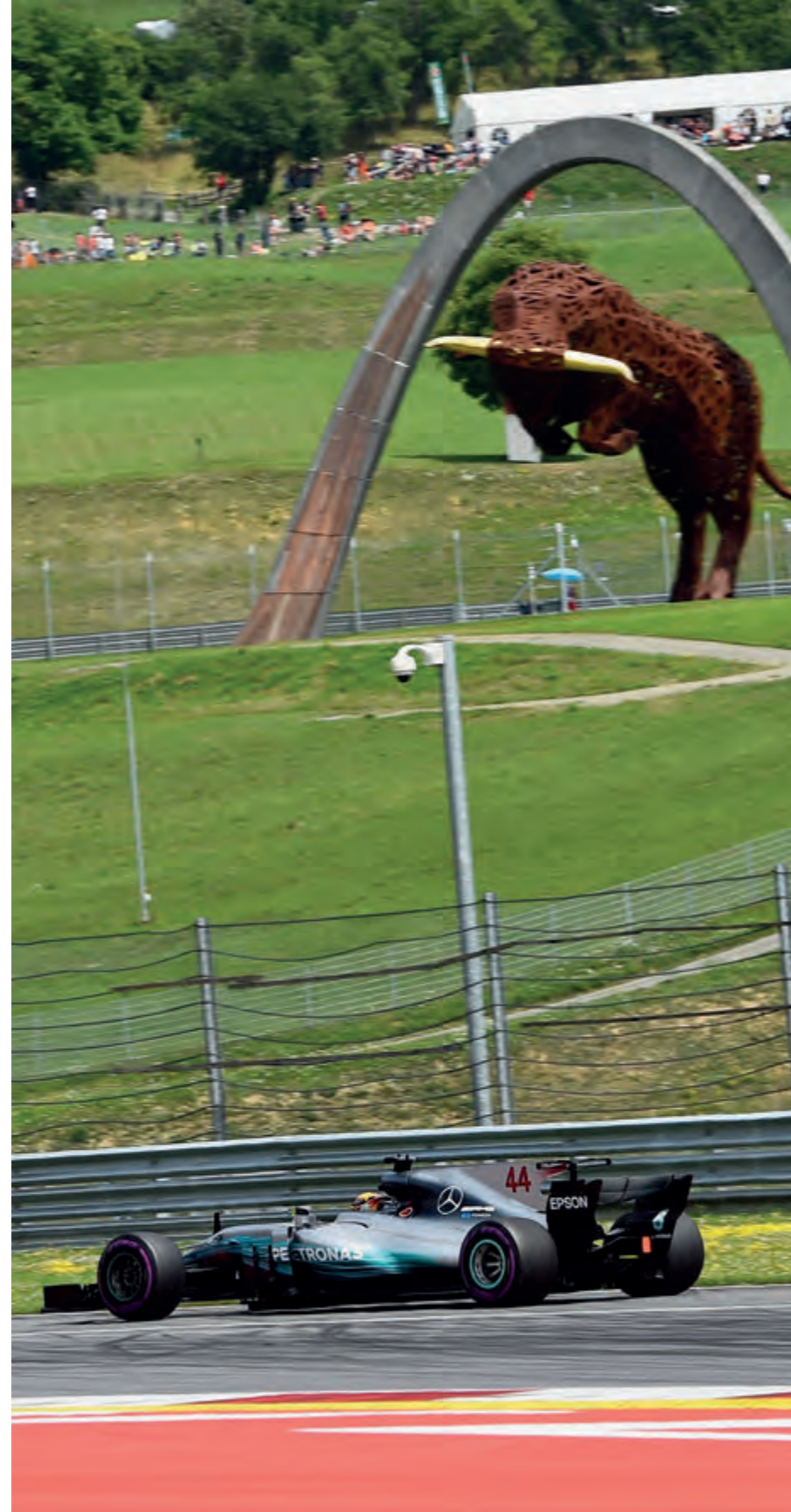
AUSTRIA

RED BULL RING

Type of Project: Modernization of Permanent Racetrack
Location: Spielberg, Austria
Client: Red Bull Spielberg
Start year and end year: 2009-2011
Status: completed, in operation

License: FIA Grade 1, FIM Grade A
Track Length: 4318 m
Number of Turns: 10

Architectural Elements: Grandstands



+ selection of projects

ABU DHABI, UAE

YAS MARINA CIRCUIT

Type of Project: Formula 1 Circuit, Permanent Racetrack
Location: Abu Dhabi, UAE
Client: Aldar
Start year and end year: 2006-2009
Status: completed, in operation

License: FIA Grade 1
Track Length: 5554 m
Number of Turns: 16

Architectural Elements:
Pit Building, incl. Race Control
Team Hospitality Buildings
Support Pit Building
Main Grandstand
Media Center
Medical Center
VIP Tower





+ selection of projects

SPAIN

MOTORLAND ARAGON

Type of Project: Permanent Racetrack
Location: Alcaniz, Spain
Client: La Ciudad del Motor Aragon
Start year and end year: 2007-2009
Status: completed, in operation

License: FIA Grade 1, FIM Grade A
Track Length: 5344 m
Number of Turns: 18

Architectural Elements: Pit Building, incl. Race Control
Media Centre
Medical Centre
Grandstands



+ selection of projects



SPAIN

VALENCIA F1 STREET CIRCUIT

Type of Project: Formula 1 Street Circuit
Location: Valencia, Spain
Client: Tyspa & Ayesa
Start year and end year: 2006-2008
Status: completed, in operation

License: FIA Grade 1
Track Length: 5419 m
Number of Turns: 25

Architectural Elements: Pit Building, incl. Race Control (temporary)
Vehicle Bridge (temporary)
Pedestrian Bridge (temporary)
Team Hospitality Buildings
Media Center (temporary)
Medical Center (temporary)
Grandstand (temporary)



JAPAN

FUJI INTERNATIONAL SPEEDWAY

Type of Project:	Permanent Racetrack
Location:	Fuji, Japan
Client:	Fuji Internat. Speedway Co., Ltd
Start year and end year:	2005-2008
Status:	completed, in operation
License:	FIA Grade 1, FIM Grade A
Track Legth:	4549 m
Number of Turns:	16
Architectural Elements:	Pit Building, incl. Race Control Medical Centre Grandstands





+ selection of projects



KINGDOM OF BAHRAIN

BAHRAIN INTERNATIONAL CIRCUIT

Type of Project: Formula 1 Circuit, Permanent Racetrack
Location: Sakhir, Kingdom of Bahrain
Client: Bahrain Internat. Circuit
Start year and end year: 2001-2004
Status: completed, in operation

License: FIA Grade 1
Track Length: 5412 m
Number of Turns: 15

Architectural Elements:
Pit Building, incl. Race Control
Main Grandstand
Team Hospitality Buildings
Grandstands
Media Center
Medical Center
VIP Tower





www.bahraingp.com

CHINA

SHANGHAI INTERNAT. CIRCUIT

Type of Project: Formula 1 Circuit, Permanent Racetrack
Location: Shanghai, China
Client: SIC (Shanghai Internat. Circuit)
Start year and end year: 2001-2004
Status: completed, in operation

License: FIA Grade 1
Track Legth: 5451 m
Number of Turns: 16

Architectural Elements: Pit Building, incl. Race Control
Main Grandstand
Team Hospitality Buildings
Grandstands
Media Center
Medical Center





FRANCE

CIRCUIT PAUL RICARD

Type of Project: Modifications, Formula 1 Circuit, Permanent Racetrack
Location: Le Castellet, France
Client: Circuit Paul Ricard
Start year and end year: 2001-2002
Status: completed, in operation

License: FIA Grade 1
Track Legth: 5842 m
Number of Turns: 15

Architectural Elements: Pit Building, incl. Race Control
Grandstands





SPAIN

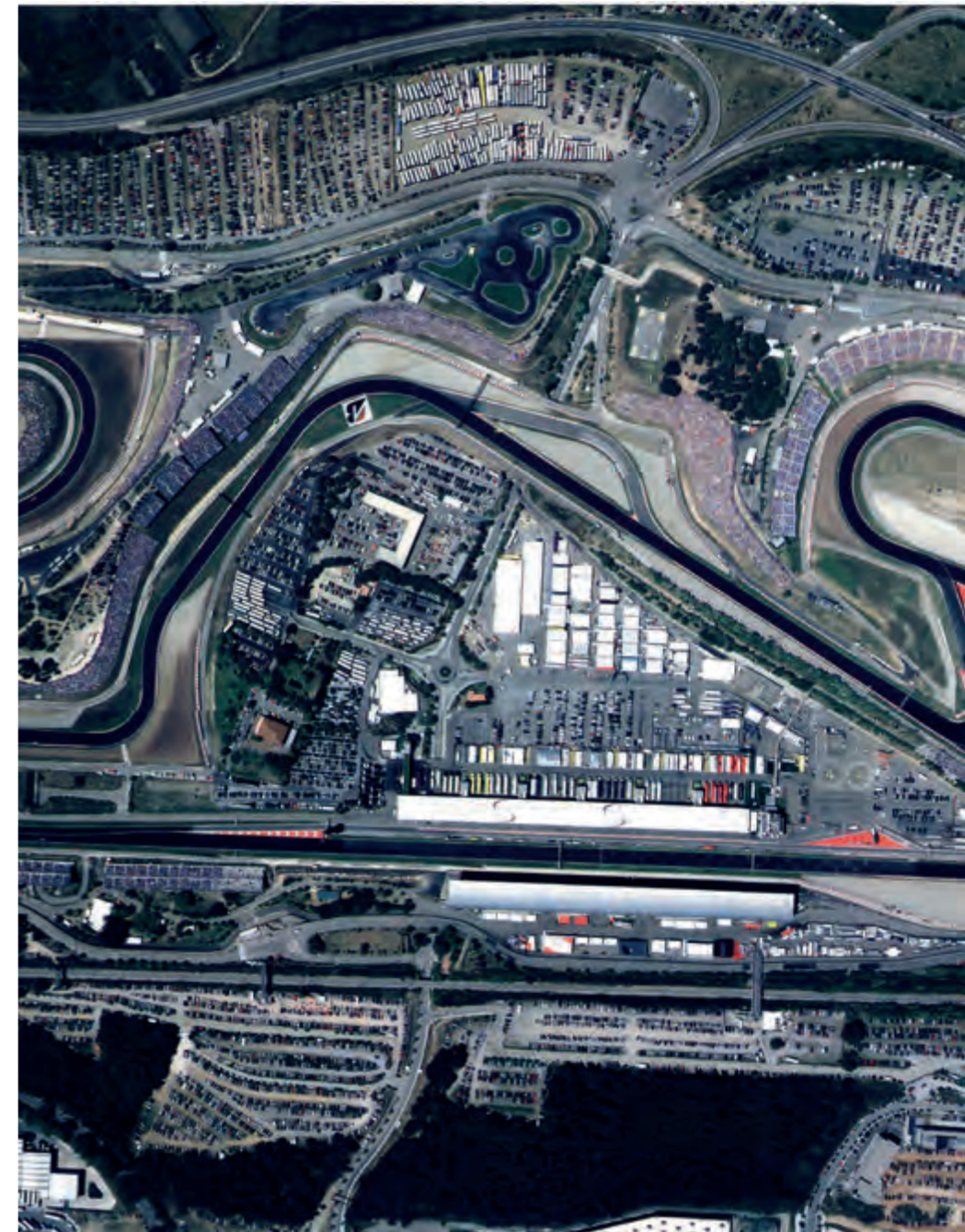
CIRCUIT DE BARCELONA-CATALUNYA

Type of Project: Track Modifications
Formula 1 Circuit, Permanent Racetrack

Location: Barcelona, Spain
Client: Consorci Del Circuit De Catalunya
Start year and end year: 2001-2002
Status: completed, in operation

License: FIA Grade 1
Track Legth: 4675 m
Number of Turns: 14

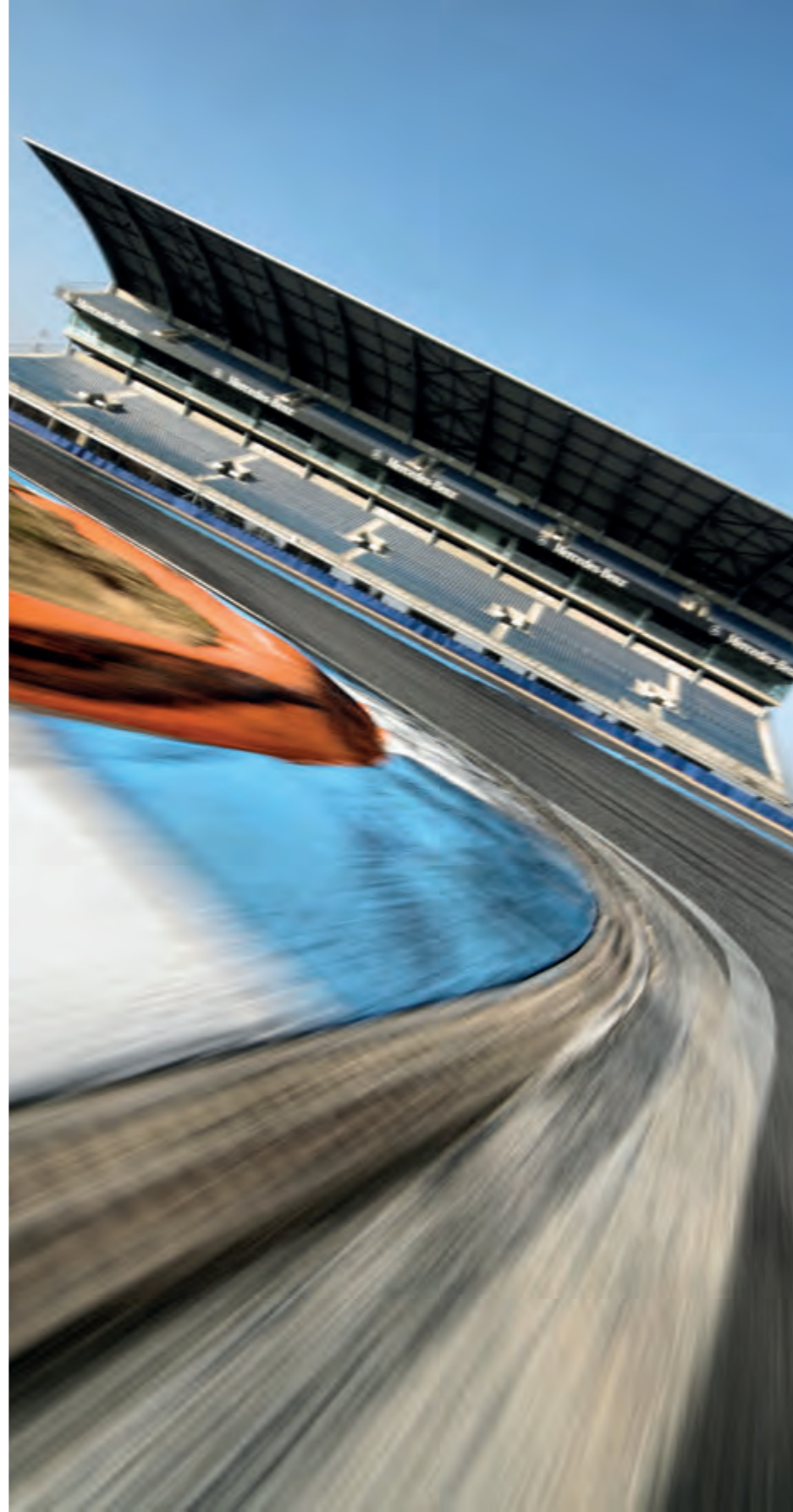
Architectural Elements: Main Grandstand



GERMANY

HOCKENHEIMRING

Type of Project:	Track Modifications, Permanent Racetrack
Location:	Hockenheim, Germany
Client:	Hockenheim Ring
Start year and end year:	2001-2002
Status:	completed, in operation
License:	FIA Grade 1, FIM Grade A
Track Length:	4675 m
Number of Turns:	17
Architectural Elements:	Main Grandstand



+ selection of projects

MALAYSIA

SEPANG INTERNATIONAL CIRCUIT

Type of Project: Permanent Racetrack
Location: Kuala Lumpur, Malaysia
Client: Malaysia Airports Berhad (Mab)
Start year and end year: 1995-1998
Status: completed, in operation

License: FIA Grade 1, FIM Grade A
Track Length: 5543 m
Number of Turns: 15

Architectural Elements: Pit Building, incl. Race Control
Main Grandstand
Team Hospitality Buildings
Grandstands
Media Center
Medical Center





+ selection of projects

CLUB VENUES



TENNESSEE, USA

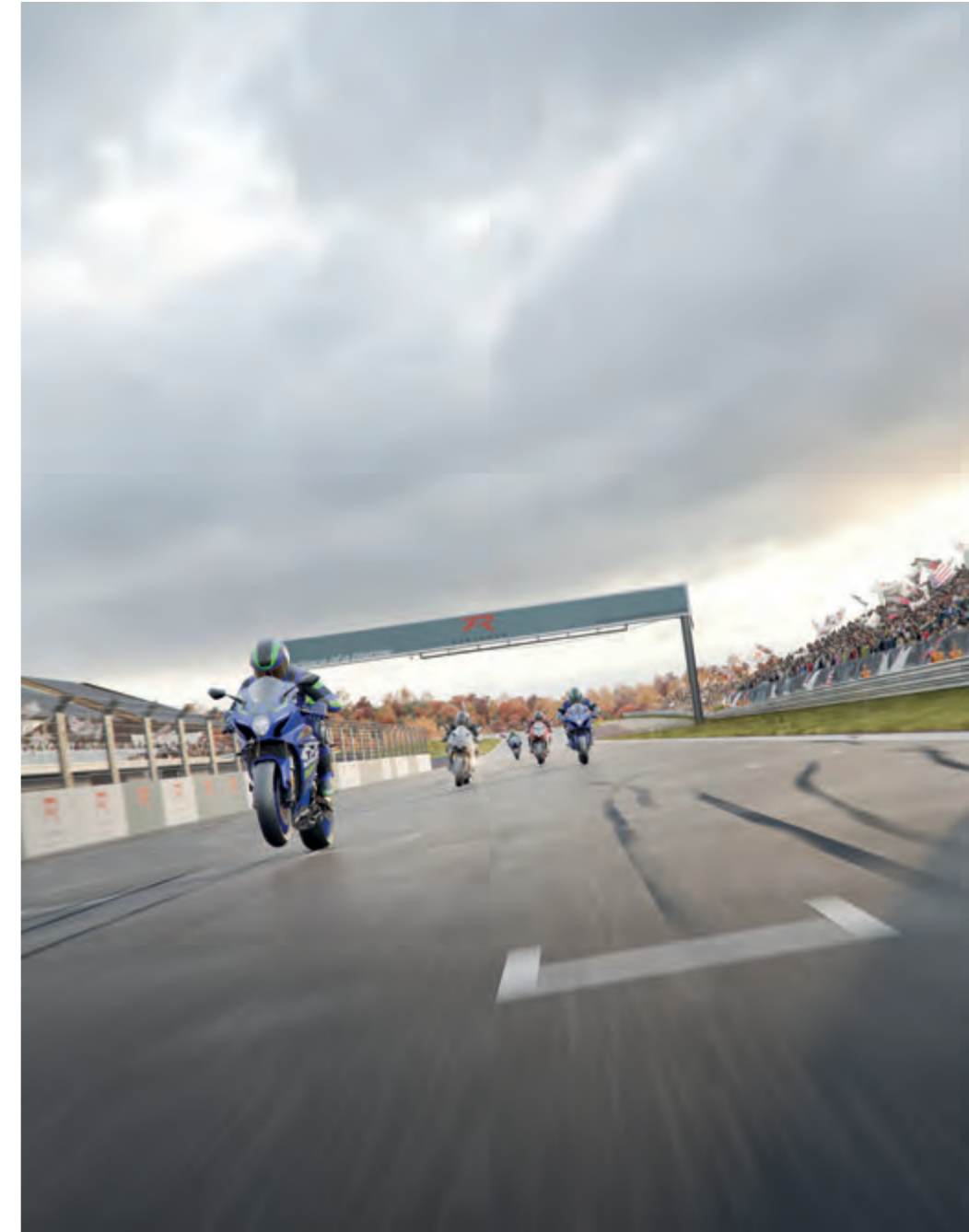
FLATROCK CLUB- & RACETRACK

Type of Project: Club Venue
Location: Cumberland County, Tennessee, USA
Client: Flat Rock Entertainment Group
Start year and end year: 2021 - to date
Status: under construction

Track Legth: 9650 m (main track)
Number of Turns: 34

Architectural Elements: Pit Building, incl. Race Control
Medical Center

Club House
Premium Garages
Club Garages
Warehouses
Restaurant & Spa
Club Villas





FLORIDA, USA

THE MOTOR ENCLAVE

Type of Project: Club Venue
Location: Tampa, Florida, USA
Client: Speedway 75 Holdings, LLC
Start year and end year: 2020-2023
Status: completed, in operation

Track Legth: 2768 m
Number of Turns: 14

Architectural Elements: Club Building
Garages



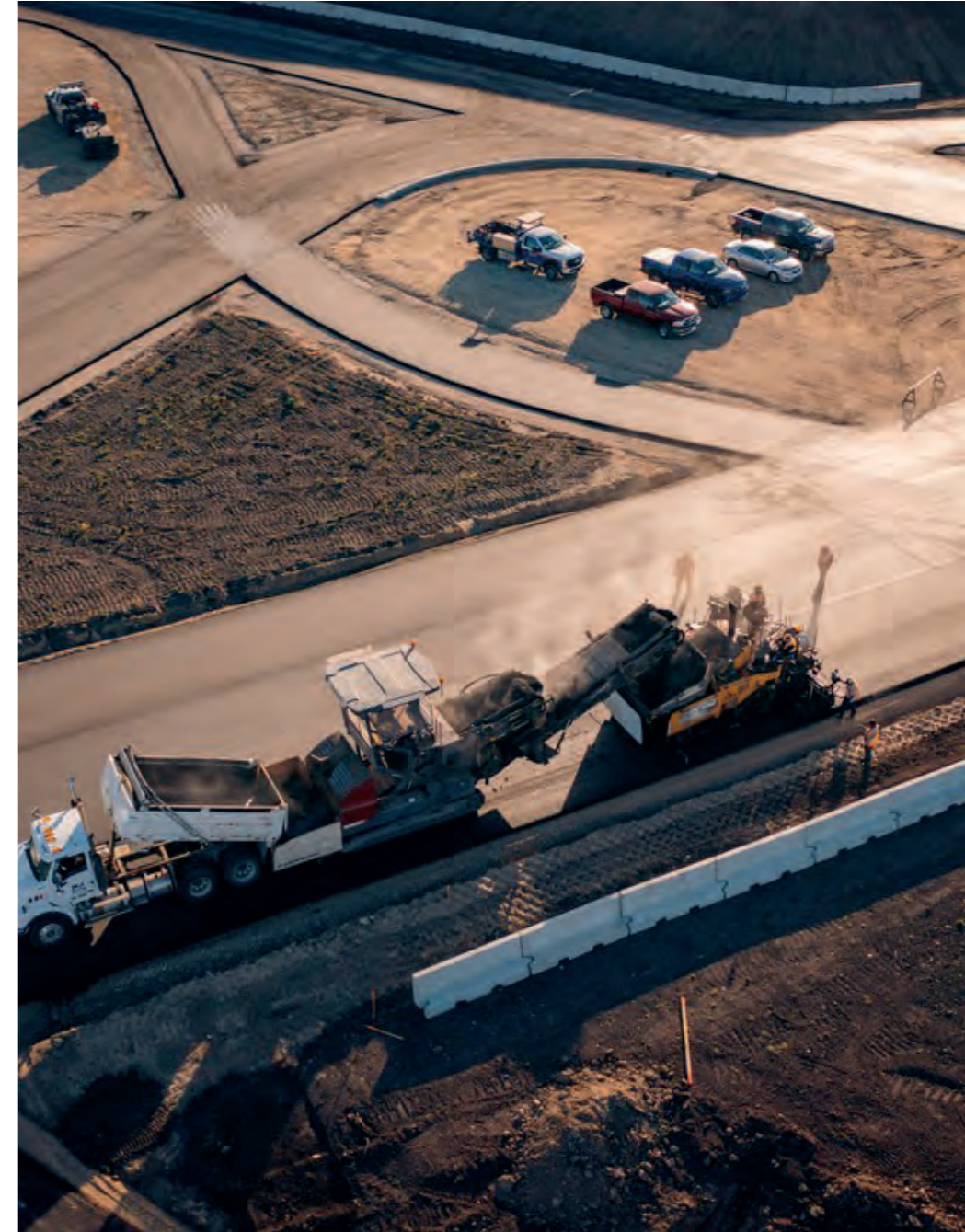
CANADA

ROCKY MOUNTAIN MOTORSPORTS

Type of Project: Club Venue
Location: Calgary, Canada
Client: Rocky Mountain Motorsports (RMM)
Start year and end year: 2021 - 2023
Status: completed, in operation

Track Legth: 3489 m (main track)
Number of Turns: 16

Architectural Elements: Club House
Premium Garages



JAPAN

THE MAGARIGAWA CLUB

Type of Project:	Club Venue
Location:	Tokyo, Japan
Client:	Cornes & Co. LTD
Start year and end year:	2021 - to date
Status:	under construction
Track Legth:	3500 m
Number of Turns:	22
Architectural Elements:	Club House Garages



NORWAY

TELEMARK RING

Type of Project: Club Venue
Location: Notodden, Norway
Client: Community of Notodden
Start year and end year: 2019
Status: Concept Planning

Track Legth: 2922 m

Architectural Elements: Club House
Garages



GEORGIA, USA

ATLANTA MOTORSPORTS PARK

Type of Project: Club Venue
Location: Atlanta, Georgia, USA
Client: Atlanta Motorsports Park
Start year and end year: 2011-2013
Status: completed, in operation

Track Legth: 2953 m
Number of Turns: 16

Elements: Main Track
CIK Kart Track level 1/A
RSTC Elements



+ selection of projects

GERMANY

BILSTER BERG

Type of Project: Club Venue
Location: Bad Driburg, Germany
Client: Bilster Berg Drive resort GmbH & Co.KG
Start year and end year: 2013
Status: completed, in operation

Track Legth: 4300 m
Number of Turns: 19

Elements: Main Track
Multiple Pitlanes
RSTC Elements
Off-road Area



NORWAY

RUDSKOGEN MOTORCENTER

Type of Project: Club Venue
Location: Rakkestad, Norway
Client: Rakkestad Motorpark AS
Start year and end year: 2009-2011
Status: completed, in operation

Track Legth: 3254 m
Number of Turns: 14

Elements: Main Track



+ selection of projects



CANADA

VANCOUVER ISLAND MOTORSPORTS CLUB

Type of Project: Club Venue
Location: Cowichan, Canada
Client: GAIN . German Auto Import Network
Start year and end year: 2013-2016
Status: completed, in operation

Track Legth: 2307 m
Number of Turns: 19

Elements: Main Track
Club Building
Dynamic Areas





CHINA

V1 AUTO WORLD

Type of Project: Club Venue
Location: Tianjin, China
Client: Waitex Group / Sino-Ocean Group
Start year and end year: 2016-2018
Status: completed, in operation

Track Legth: 2500 m
Number of Turns: 14

Elements: Main Track
Welcome Center
Club Building
Car Dealerships



+ selection of projects



RUSSIA

IGORA DRIVE

Type of Project: Club Venue
Location: St. Petersburg, Russia
Client: Igora Drive
Start year and end year: 2016-2018
Status: completed, in operation

Track Legth: 5182 m

Architectural Elements: Pit Building, incl. Race Control
Club House
Medical center

Additional Elements: RSTC
Kart Track
Rally Cross
Moto Cross



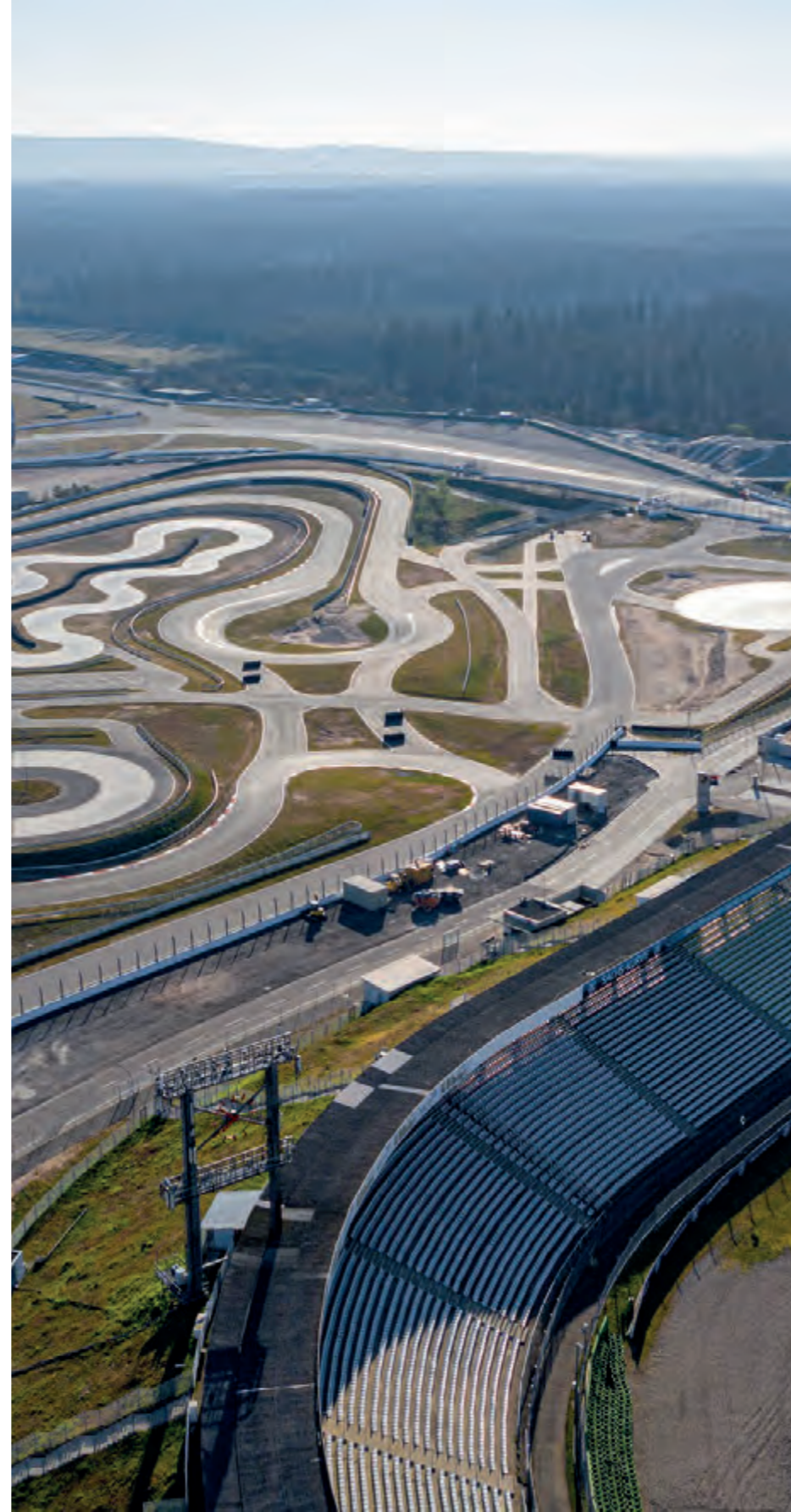
GERMANY

PORSCHE EC HOCKENHEIM

Type of Project: Club Venue
Location: Hockenheim, Germany
Client: Porsche AG
Start year and end year: 2017-2019
Status: completed, in operation

Track Legth: 2800 m

Elements: Handling Course
Elements of World Class Race Tracks
RSTC
Off-road Area
Dynamic Area



+ selection of projects



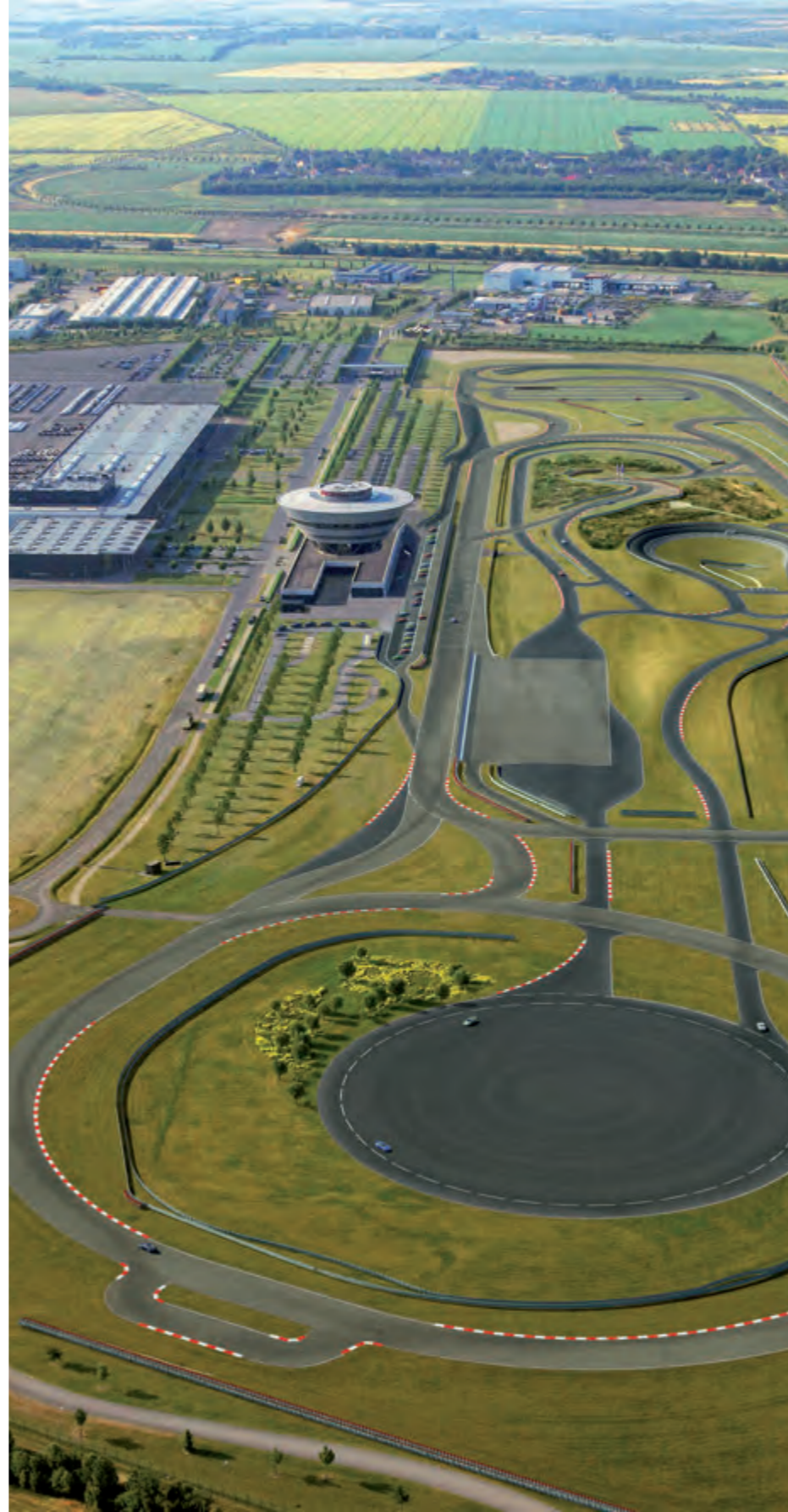
GERMANY

PORSCHE EC LEIPZIG

Type of Project: Club Venue
Location: Leipzig, Germany
Client: Porsche AG
Start year and end year: 2002 and 2012
Status: completed, extended, in operation

Track Length: 3700 m

Elements: Handling Course
Elements of World Class Race Tracks
RSTC
Off-road Area
Dynamic Area



+ selection of projects



GEORGIA, USA

PORSCHE EC ATLANTA

Type of Project: Club Venue
Location: Atlanta, Georgia, USA
Client: Porsche AG
Start year and end year: 2013-2015
Status: completed, in operation
extension in development

Track Legth: 2574 m

Elements: Handling Course
RSTC
Off-road Area
Dynamic Area



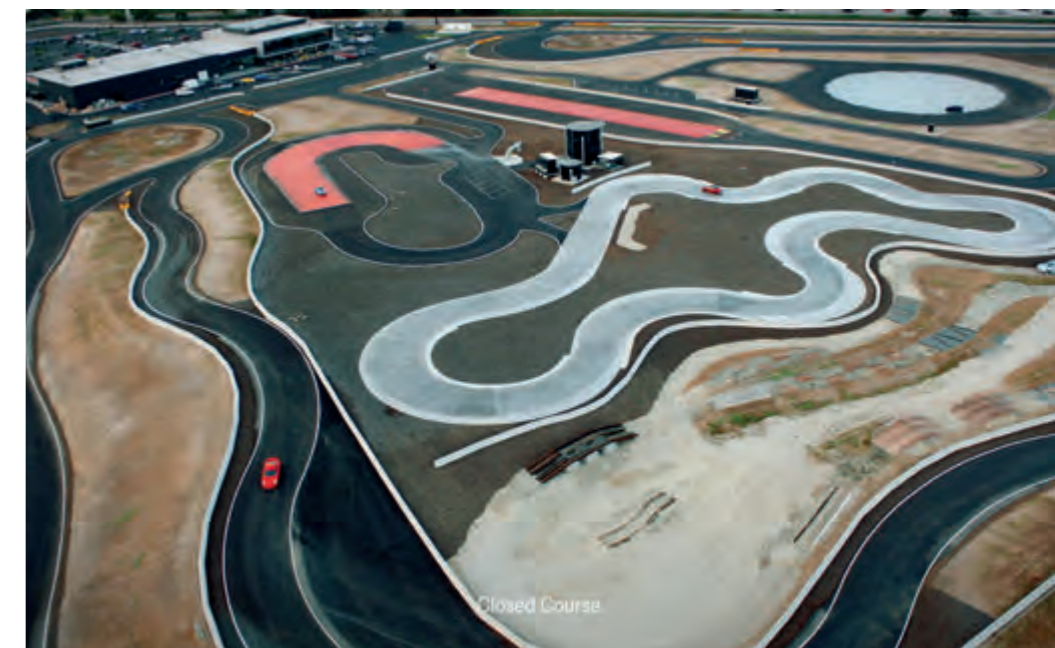
CALIFORNIA

PORSCHE EC LOS ANGELES

Type of Project: Club Venue
Location: Los Angeles, California, USA
Client: Porsche AG
Start year and end year: 2015-2017
Status: completed, in operation

Track Legth: 2092 m

Elements: Handling Course
Elements of World Class Race Tracks
RSTC
Off-road Area
Dynamic Area
Ice Hill



+ selection of projects

FRANCE

PORSCHE EC LE MANS

Type of Project: Club Venue
Location: Le Mans, France
Client: Porsche AG
Start year and end year: 2015-2017
Status: completed, in operation

Track Legth: 2817 m

Elements: Handling Course
Long Straight
RSTC
Off-road Area
Dynamic Area
Ice Hill



JAPAN

PORSCHE EC TOKYO

Type of Project: Club Venue
Location: Tokyo, Japan
Client: Porsche AG
Start year and end year: 2019-2021
Status: completed, in operation

Track Legth: 2092 m

Elements: Handling Course
RSTC
Off-road Area
Dynamic Area
Ice Hill



SPAIN

ASCARI

Type of Project: Club Venue, Track Modifications
Location: Malaga, Spain
Client: Ascari
Start year and end year: 2021
Status: completed, in operation

Track Legth: 5425 m



BELGIUM

CIRCUIT ZOLDER

Type of Project: Club Venue
Location: Heusden-Zolder, Belgium
Client: Porsche AG
Start year and end year: 2021
Status: Masterplan Study

Track Legth: 4010 m

Elements: Track Modifications
New Pit Building



+ selection of projects



MEXICO

MDR - MEXICO DRIVE RESORT

Type of Project: Club Venue, Track Modifications
Location: Toluca, Mexico
Client: Mexico Speedway Drive Resort
Start year and end year: 2018-2021
Status: completed, in operation

Track Legth: 3745 m

Architectural Elements:
Club House
Villas
Driving School
Garages





KARTING TRACKS

FLORIDA, USA

NELSON PIQUET JR KARTING TRACK

Type of Project: Kart Track
Location: Miami, Florida, USA
Client: Nelson Piquet jr. Entertainment & Race Park
Start year and end year: 2020
Status: Masterplan Study

Track Legth: 1025 m

Elements: Main Building
Kart Track



+ selection of projects



RUSSIA

IGORA DRIVE KARTING TRACK

Type of Project: Kart Track
Location: St. Petersburg, Russia
Client: R-Industria St. Petersburg
Start year and end year: 2019
Status: completed, in operation

License: CIK Level 1/A
Track Legth: 1200 m

Elements: Main Building
Kart Track



AZERBAIJAN

BAKU CITY KARTING TRACK

Type of Project: Kart Track
Location: Baku, Azerbaijan
Client: Baku City Karting
Start year and end year: 2017-2018
Status: completed, in operation

License: CIK Level 1/A
Track Legth: 802 m



SINGAPORE

KF1 KARTING CIRCUIT

Type of Project: Kart Track
Location: Singapore
Client: KF1 Karting
Start year and end year: 2014
Status: completed, in operation

License: CIK Level 1/A
Track Legth: 960 m



CHINA

SIC KARTWORLD

Type of Project: Kart Track
Location: Shanghai, China
Client: SIC Kartworld
Start year and end year: 2012-2013
Status: completed, in operation

License: CIK Level 1/A
Track Legth: 1234 m



+ selection of projects

GEORGIA, USA

AMP KART RACING

Type of Project: Kart Track
Location: Atlanta, Georgia, USA
Client: Atlanta Motorsports Park
Start year and end year: 2013
Status: completed, in operation

License: CIK Level 1/A
Track Length: 1368 m



GERMANY

KARTING TRACK BOBFINGEN

Type of Project: Kart Track
Location: Bobfingen, Germany
Client: Motorsportsclub „ibf“ Bobfingen
Start year and end year: 2010-2011
Status: completed, in operation

License: CIK Level 1/A
Track Legth: 1021 m



BRASIL

KARTING TRACK BETO CARRERO

Type of Project:	Kart Track
Location:	Penha, Brasil
Client:	Beto Carrero
Start year and end year:	2011
Status:	completed, in operation
License:	CIK Level 1/A
Track Legth:	1200 m



+ selection of projects

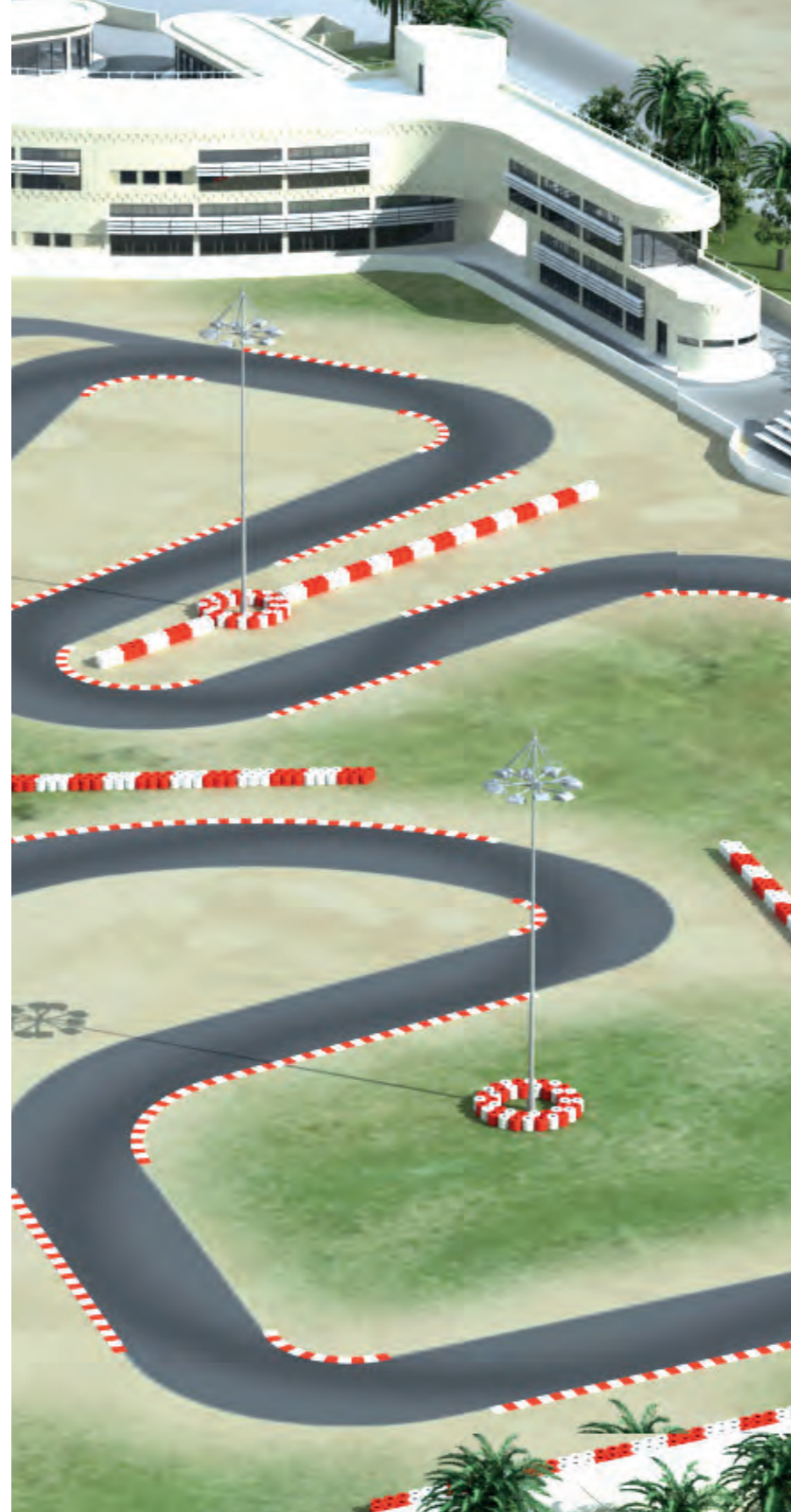


EGYPT

KART CIRCUIT CAIRO

Type of Project: Kart Track
Location: Cairo, Egypt
Client: Egyptian Motor Sport CO.
Start year and end year: 2010
Status: Masterplan Study

Track Legth: 1132 m



+ selection of projects



LATVIA

KANDAVAS KARTODROMS

Type of Project: Kart Track
Location: Kandava, Latvia
Client: Kandavas Kartodroms
Start year and end year: 2008
Status: completed, in operation

License: CIK Level 1/A
Track Legth: 1012 m



+ selection of projects

TEST FACILITIES

CZECK REPUBLIC

BMW PROVING GROUND

Type of Project: Test Facility
Location: Sokolov, Czeck Republic
Client: BMW Group
Status: in progress

Track Legth: 170 km (combined)

Elements: 16 different Test Modules
600 different sections ans test components



+ selection of projects

ORLANDO, USA

SUNTRAX AUTONOMOUS PROVING GROUND

Type of Project:

Test Facility

Location:

Orlando, USA

Client:

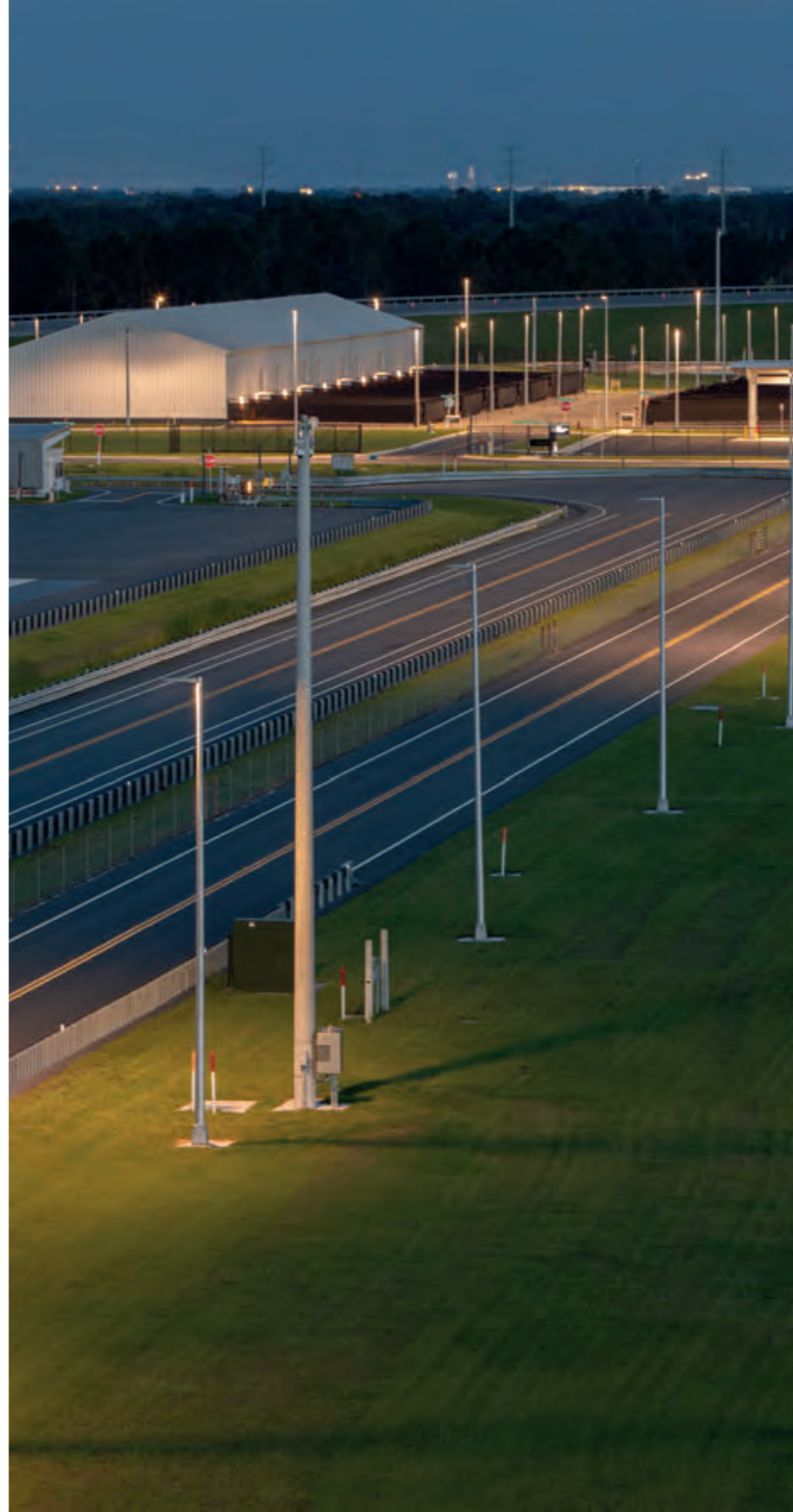
Florida Department of Transportation

Status:

in progress

Elements:

9 different Test Modules



+ selection of projects



GERMANY

DAIMLER PRÜF- & TECHNOLOGIEZENTRUM

Type of Project:

Test Facility

Location:

Immendingen, Germany

Client:

Daimler AG

Start year and end year:

until 2019

Status:

completed, in operation

Elements:

68 km Track (combined)

30 different Test Modules

Oval Circuit

Handling Course

4x4 Module



+ selection of projects

GERMANY

BOSCH PROVING GROUND BOXBERG

Type of Project: Test Facility
Location: Boxberg, Germany
Client: Robert Bosch GmbH
Start year and end year: 2015
Status: completed, in operation

Track Legth: 15 km combined

Elements:
2 Handling Courses
Performing Area
High Speed Oval
Dynamic Area
Off-road Area
Multifunction Area



BELGIUM

TOYOTA PROVING GROUND

Type of Project: Test Facility
Location: Zaventem, Belgium
Client: Toyota Motors Europe
Start year and end year: 2009-2011
Status: completed, in operation

Elements:
Oval Circuit
Dynamic Area
Rough Road Track
Noise Lane
Low Friction Road



GERMANY

DAIMLER TRUCK TESTING CENTER

Type of Project:

Test Facility

Location:

Wörth, Germany

Client:

Daimler Chrysler

Start year and end year:

until 2007

Status:

completed, in operation

Elements:

Durability Track Modules

Different Testing Facilities



GERMANY

DRIVING CENTER NÜRBURGRING

Type of Project:	Test Facility
Location:	Nürburg, Germany
Client:	Auto Motor und Sport
Start year and end year:	until 1994
Status:	completed, in operation
Elements:	5 different Test Modules



+ selection of projects

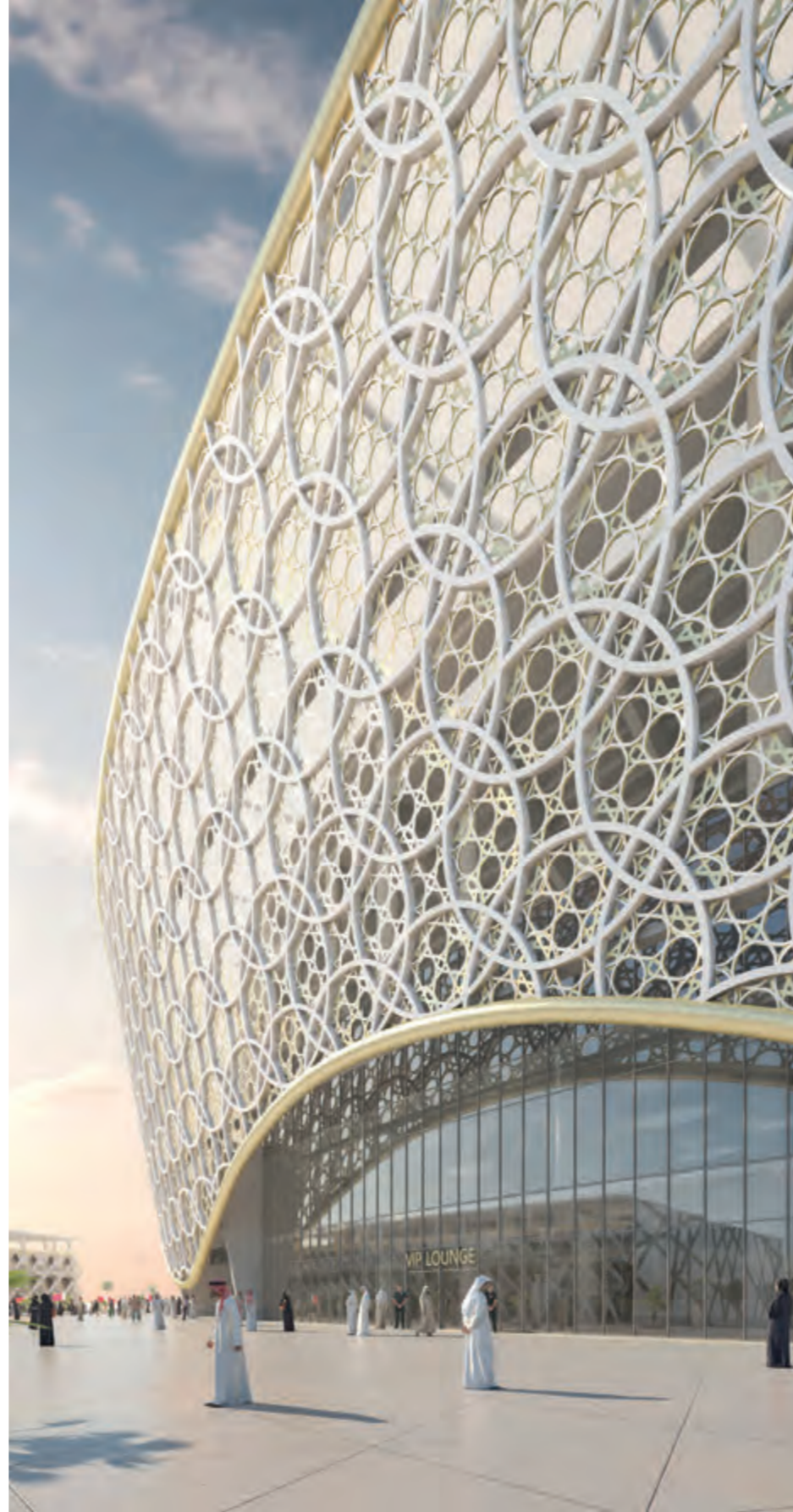
+ selection of projects

ARCHITECTURAL PROJECTS

KINGDOM OF BAHRAIN

NEW FOOTBALL STADIUM

Type of Project:	FIFA Compliant Football Stadium
Location:	Sakhir, Kingdom of Bahrain
Client:	Ministry of Works
Capacity:	50.000 seats
Start year and end year:	2017-2019
Status:	in progress



+ selection of projects



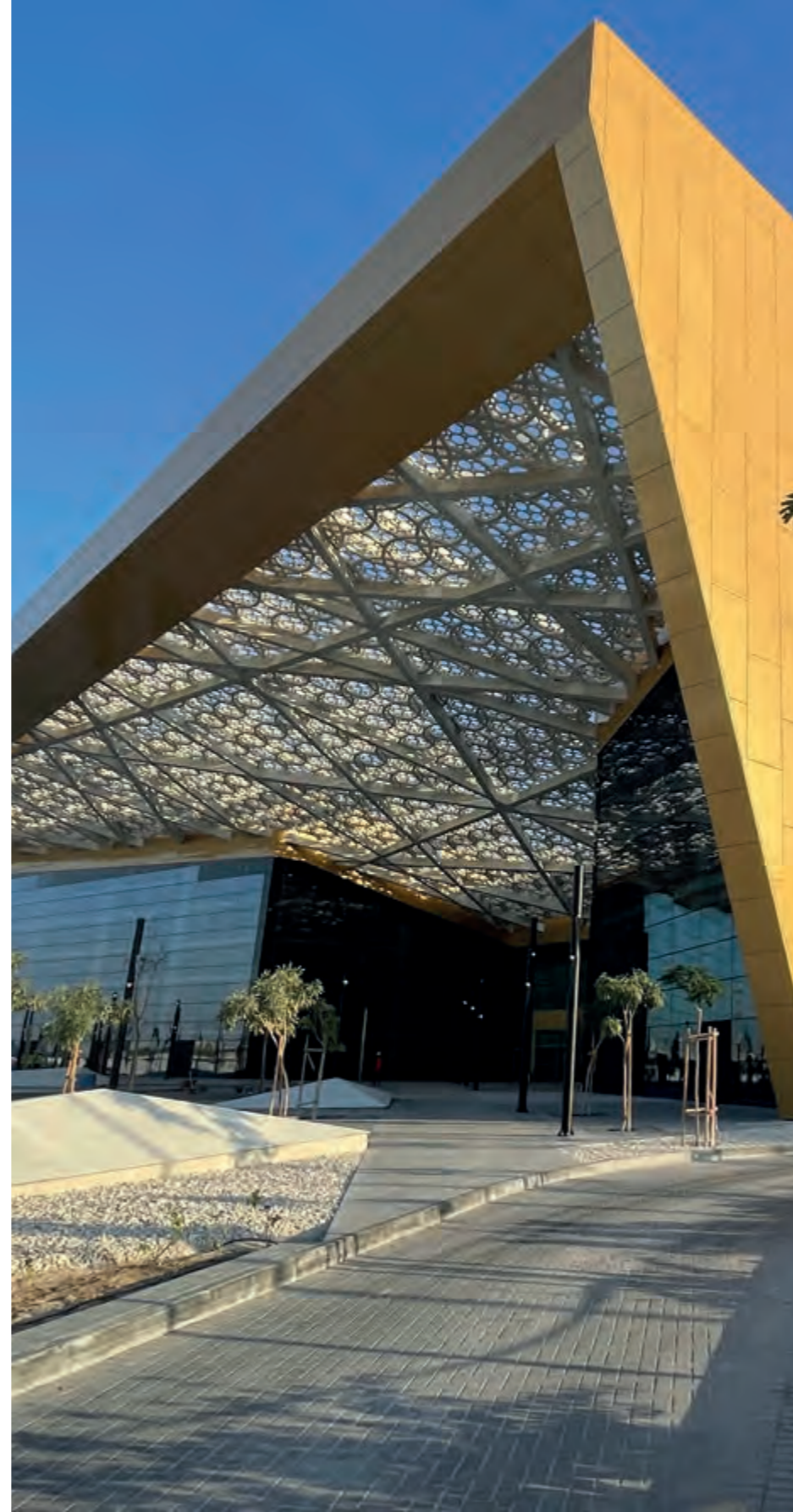


KINGDOM OF BAHRAIN

EXHIBITION WORLD BAHRAIN

Type of Project: Exhibition & Convention Center
Location: Sakhir, Kingdom of Bahrain
Client: Ministry of Youth & Sport Affairs
Start year and end year: 2017-2022
Status: completed

Elements: 10 Exhibition Halls
Grand Hall
Meeting Areas
Restaurant
Shops





QATAR

DHOW VILLAGE

Type of Project: Urban Development
Location: Doha, Qatar
Client: Ministry of Works
Start year and end year: 2020
Status: Concept Design

Elements: Marina
Leisure
Food & Beverage
Shops





GERMANY

DIVAG LOX

Type of Project:

Location:

Client:

Start year and end year:

Status:

Elements:

Offices, Exhibition

Neuss, Germany

LOX Grundstücksgesellschaft bR

2012-2013

on hold

Offices

Exhibition Halls, Museum

Car Park



+ selection of projects

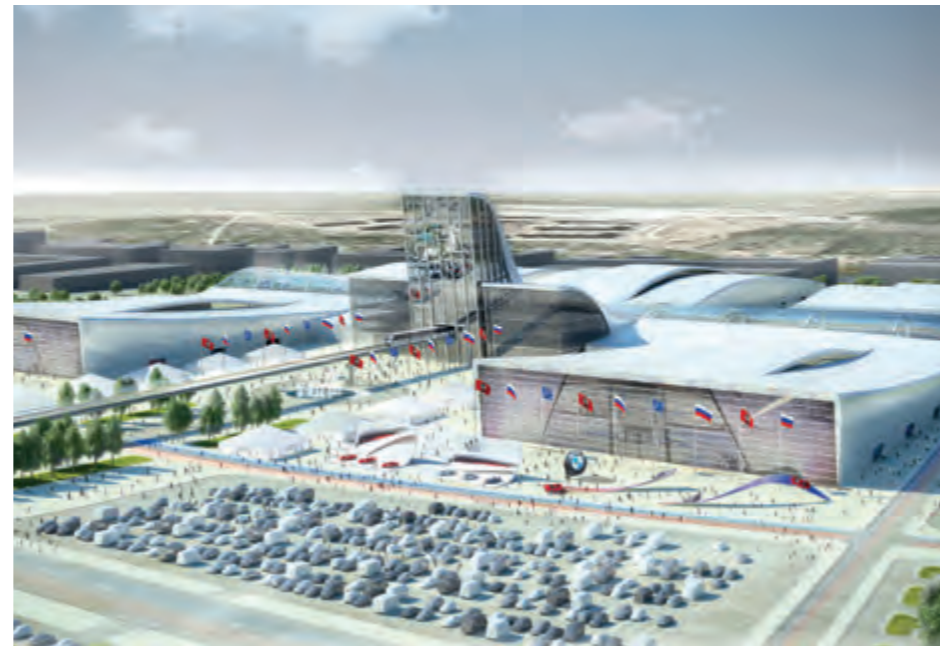


RUSSIA

VNUKOV AEROPOLIS EXPOGLOBUS

Type of Project: Trade Fair
Location: Moscow, Russia
Client: SMP Racing LLC
Start year and end year: 2015
Status: Concept Design

Elements: Hotel
Offices
Retail
Conference Rooms
Racetrack



GERMANY

KASTANIENHOF

Type of Project: Housing
Location: Cologne, Germany
Client: Kastanien Hof Stiftung
Start year and end year: 2014-2017
Status: completed

Elements: 48 Apartments
Barrier-free Design



+ selection of projects

GERMANY

COMFORT HOTEL MONHEIM

Type of Project: Hotel, Offices, Sport Complex
Location: Monheim, Germany
Client: DIVAG-LO7 Projektgesellschaft
Start year and end year: 2016-2018
Status: completed

Elements: Hotel
Offices
Sport Complex



RUSSIA

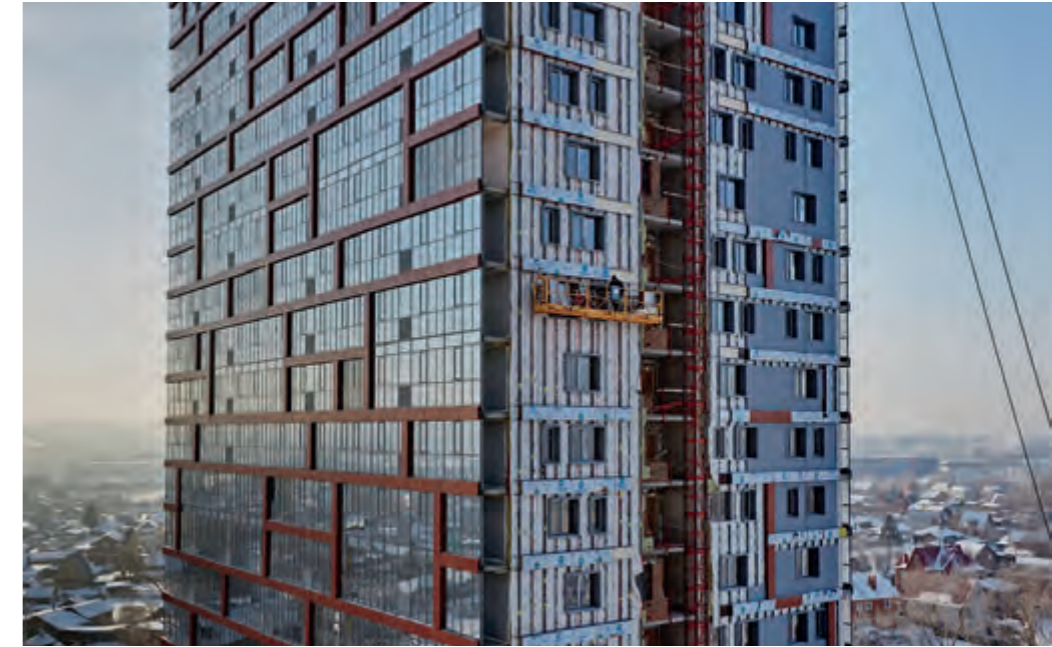
BRIGHT SHORE RESIDENTIAL

Type of Project: Housing
Location: Novosibirsk, Russia
Client: SMP Racing LLC
Start year and end year: 2014
Status: Masterplan & Concept Design

Elements: Apartment Buildings
Kindergarden
Shopping



+ selection of projects



GERMANY

NEY HOTEL

Type of Project: Hotel
Location: Norderney, Germany
Client: PL Projektbau Lingen GmbH & Co. KG
Start year and end year: 2014
Status: Investor Competition

Elements:
5+ Star Hotel
Conference Rooms
Ballroom
Restaurants
Spa
Underground Car Park



ABU DHABI, UAE

REHABILITATION CENTER

Type of Project: Healthcare
Location: Abu Dhabi, UAE
Client: Seha Abu Dhabi Health Services Co.
Start year and end year: 2012
Status: Construction Design

Elements:
Rehabilitation Center
Conference Rooms
Shops
Restaurants
Car Park



KINGDOM OF BAHRAIN

RUF AUTOMOBILE ASSEMBLY CENTER

Type of Project:

Automobile Assembly

Location:

Sakhir, Kingdom of Bahrain

Client:

RUF Bahrain W.L.L.

Start year and end year:

until 2007

Status:

completed

Elements:

2 Car Manufactories

Press Assembly & Assembly Workshops

Customer Relations Center

Showroom

Lounge

Restaurant

Cafe



+ selection of projects



GERMANY

CHIO EQUESTRIAN STADIUM

Type of Project: Stadium
Location: Aachen, Germany
Client: Aachen Laurensberger Rennverein ALRV
Start year and end year: until 2006
Status: completed

Elements: New Grandstands
Administration
Control Tower



THE TILKE COMPANY
OUR OFFICES

**Your curiosity has been aroused
and you want to know more about our services?
We are looking forward to hearing from you!**

GERMANY - HEAD OFFICE

Tilke GmbH & Co. KG
Krefelder Strasse 147
52070 Aachen
Germany

Tel.: +49 (0) 241 9134 - 0
Fax: +49 (0) 241 9134 - 400
E-Mail: mailbox@tilke.de

GERMANY

Tilke GmbH & Co. KG
Hatzenbergstrasse 3
57462 Olpe
Germany

Tel.: +49 (0) 2721 9645 - 0
Fax: +49 (0) 2721 9645 - 22
E-Mail: mailbox-olpe@tilke.de

KINGDOM OF BAHRAIN

B.K.I.C. Building, 8th Floor,
House No.168
Road No. 1703
Area 317, Diplomatic Area
Post Box No. 11224
Manama, Kingdom of Bahrain
Tel. 1: +973 (0) 17 540 - 028
Tel. 2: +973 (0) 17 530 - 198
Fax: +973 (0) 17 530 - 861
E-Mail: mailbox@tilkebahrain.com

MEXICO

Tilke Consultores S.A. de C.V. Mexiko
Blvd. Kukulcan km 12 Zona Hotelera,
Isla Dorada, Isla Hechizada C4
77500 Cancun - Quintana Roo
México

Tel.: +52 (1) 998 147 - 5345
Fax: +52 (1) 998 146 - 5149
E-Mail: christian.epp@tilke.com

UNITED STATES

United States
Tilke Americas, LLC.
515 Congress Ave Ste 2020
Austin, TX 78701-3506,
USA

Tel.: +1 512 550 0555
E-Mail: christian.epp@tilke.com



Tilke^T
ENGINEERS & ARCHITECTS

Tilke GmbH & Co.KG
Krefelder Straße 147
52070 Aachen
Germany

Phone: +49 241 9134-0
Fax: +49 241 9134-400
mailto:mailbox@tilke.de
www.tilke.de

All copyrights are reserved for TILKE GmbH & Co. KG & further usage and processing of our original layout(s) by any other planner/ designer or third party is only permitted with the consent of Tilke GmbH & Co. KG.